

# NEWSLETTER



April 2008



Vol. 1 Issue 7

**Annual Village Meeting  
Monday 28<sup>TH</sup> April 2008  
8pm in Hartfield Village Hall**

## CHAIRMAN'S REPORT

**T**his is the Spring issue of the parish newsletter, I say Spring, yet some of our more unfortunate residents have had a miserable time with their homes being flooded. Cllr Tommy Mitchell has worked closely with East Sussex County Council to have the storm drains cleaned and unblocked after the torrential downpours. There is still more work to be done and we will continue to involve ESCC to have this problem resolved. My sympathy goes out to those who have been affected by the floods.

Several parishioners air their concerns regularly about the speed of traffic entering and driving through Hartfield. We have made a request to ESCC to have the speed limit reduced. We have also been informed that the speed limit in Upper Hartfield will be reduced to 30mph in 2008/2009. ESCC will be conducting a safety assessment during 2008/2009 on the B2110.

The Pavilion refurbishment programme is underway coordinated by the Town Croft and Parish Assets Committee working closely with the Sports Clubs and interested parishioners. An article giving more details appears later in this newsletter. I do hope you will give your full support to the various activities being planned. The Pavilion although mainly a sports venue is also used for smaller meetings and of course for the popular Horticultural Show and Village Fete.

We have been asked to involve more parishioners at the monthly Parish Council meetings, so it was suggested that we hold meetings in different venues throughout the Parish. As an experiment we will hold the 2<sup>nd</sup> June meeting at the Vicarage Rooms at Coleman's Hatch Church at 20.00. Tea and coffee will be available before the meeting. For those of you who have not attended before, it is not quite Vicar of Dibley style, there is time allowed before the formal meeting for questions from the public! Announcements about other meetings will be published shortly.

I look forward to welcoming you to the Annual Parish Meeting on Monday 28<sup>th</sup> April at 8pm in the Village Hall.

**John Chalke – Chairman Hartfield Parish Council.**

## THE COAL YARD

We are steaming ahead with our plans to redevelop the old coalyard for the benefit of the community. We are now back on track with our discussions with Town and Country using our preferred architect. As reported previously, Hartfield like many other rural villages desperately needs affordable housing for our local people for those who have family connections or work in the village. Our aim is to use half the land to build a small flagship site with the best of design, perhaps railway themed and of course eco friendly. We will keep you posted and when we have some plans to show you look for your support to combat some of the previous negative comments regarding views! We will be left with the goods shed and plenty of parking, having enabled the playschool to have a fantastic garden.



***Where is this taken from & what stands out?***

## HARTFIELD HEALTH CENTRE

We are pleased to bring you, hot off the press, an extract from a progress report on the Health Centre also explaining changes at the Groombridge practice received from Dr. Andrew Wolfle.

**Onwards and Upwards:** CLM, representing the De Le Warr Estate, and Ashley House, developers chosen by the Primary Care Trust have, with the support of the Parish Council, obtained planning permission for the new health centre. We have detailed plans drawn up for a building of 371 square metres (approximately three times the size of our Groombridge Surgery) with parking which will include the existing car park and the area under the temporary accommodation. The building will be fit for purpose, with three Doctor consulting rooms and a large nurse/treatment room. There will be a dispensary and a meeting room for the Doctors and Staff. As a practice many more of our staff will work in Hartfield, which will become our administrative hub. The developer's proposed time is now August 2008 with completion in June 2009.



**End of an Era:** Dr Peter Steel, who has been a GP in Groombridge for the past 50 years, is retiring at the end of April. Peter has continued to work with us handling out of hours calls since my wife and I took over the practice in Groombridge in 1995. Both practice and community have been very well served by Peter and his wife Rosamund and his father before him. Our best wishes for a happy and healthy retirement.

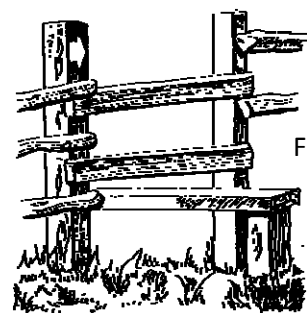
**Moving on:** Dr Julian Barnaby will be leaving the practice at the end of May. This is an amicable parting as he wishes to join the larger Grosvenor Road medical practice in Tunbridge Wells to pursue his interests in acupuncture, homeopathy and rheumatology. His contribution to the practice has been enormous and we are sad that he is leaving us.

**New faces & New challenges:** We are interviewing a very strong shortlist of candidates as a partner at the practice. We will appoint in early May, hoping for a start date in August. We continue to look forward to the challenges ahead, and hope to have premises nearing completion and a new partner when we report next year

*Dr Andrew Wolfle*

## RIGHTS OF WAY

The ROW Committee are delighted that Robins Lane has been reopened after many years. When ESCC issue the Modification Order, it will be put on the Definitive Map as Footpath No 79.



Pooh Bridge Diversion - this has progressed over the past year. Legal agreements have to be drawn up and then a Bridleway Diversion Order will be published for public consultation.

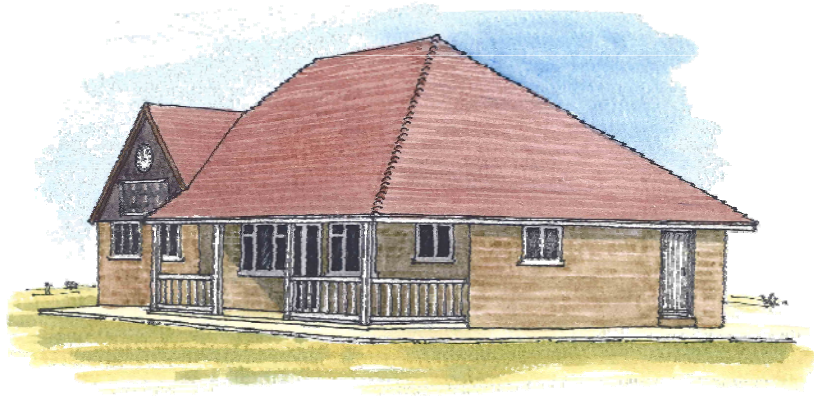
FP15 Faircote Hall - the appeal by the landowner against Wealden District Council's enforcement notice is due to be heard by the Inspectorate in July 2008 in Hailsham. The retrospective application to retain the sandschool in a revised position will be decided on the 1<sup>st</sup> May at Crowborough DCN meeting. This has generated a great deal of correspondence from parishioners. Lamberts - it is hoped that ESCC will shortly make a Modification Order to put this right of way on the Definitive Map.

Parish Walks - Mrs. Janet Littleford has been arranging a series of walks to be published in the Parish Magazine for our parishioners to enjoy. The first for this year will appear in May. The footpath working parties continue to enjoy their walks whilst doing excellent work in helping East Sussex keep our footpaths clear. .

Assistant Tree Warden, Stephen Young has been appointed Verifier for the Ancient Tree Forum. He checks trees that have been reported to him and sends details to the Forum. Already he has recorded 120 trees. So do get out there and help him.

Walk in the Woods in June this year includes St Mary's School, Hartfield, St. Michael's School, Withy ham and we welcome High Hurstwood Primary School, High Hurstwood who are joining us. We are going to Park Wood, Hellingly to carry out an ancient tree hunt.

**Clair Park - Chair of Rights of Way**



*A Local Artist's Impression*

## THE PAVILION RENOVATIONS

The Pavilion was originally built in 1979 on the site of a former wooden cricket pavilion and it is now very dated and in need of complete refurbishment both inside and out to bring it up to modern day sports clubs standards and meet health and safety requirements. It is an ambitious programme, based on wide consultations with the players and assistance from parishioners. The most expensive part will be the new roof at a steeper pitch to accommodate a veranda for both spectators and players. No architect has

yet been appointed but based on wide consultations we have obtained an artist's impression of what the pavilion might look like. An electronic scoreboard and outside clock will complete the planned transformation.

Below is the current fundraising programme to kick the fund into action, donations and grants will of course be actively pursued concurrently.

### FUND RAISING EVENTS

Concert on the Croft following Horticultural Show - 2<sup>nd</sup> August  
Golf Day and Dinner at Royal Ashdown Golf Club - 2<sup>nd</sup> September  
Triangular Cricket Tournament - 21<sup>st</sup> September  
Sports /Cricket Club Dinner, High Rocks - 1<sup>st</sup> November

### NEXT YEAR

Auction Village Hall - 28<sup>th</sup> February  
Cricket Coaching - 6<sup>th</sup> 7<sup>th</sup> 8<sup>th</sup> & 9<sup>th</sup> April 2009  
Fun Run - 26<sup>th</sup> April 2009

The next event to watch out for is the Concert on 2 August. Tickets will go on sale nearer the time. Offers of help for this ambitious concert would be much appreciated.



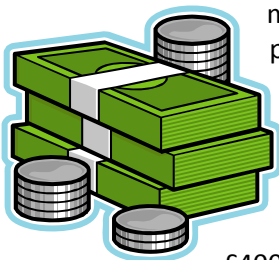
### Junior Cricket Coaching in Hartfield

We have just had our (first of many) Junior Cricket Coaching week. While this activity was designed to raise the profile of Junior Cricket and to give local youngsters a worthwhile activity during their spring holiday, we also made a healthy profit. A photograph was printed on the front page of the Kent & Sussex Courier (Crowborough edition) all excellent publicity.

## THE PAVILION RENOVATION FUND

Fund raising for the Pavilion is well underway. All money raised will go towards refurbishment not routine maintenance, which in view of the new plans will be kept to an absolute minimum anyway.

As the Parish Council owns the pavilion, donations need to be carefully monitored and be fully accountable to the public. Although our Clerk is the proper financial officer, it was felt desirable to have a councillor who was also a member of the Croft & Assets Committee, to administer the donations coming in which have been placed in an earmarked reserve just for this purpose. We have appointed Jo Edwarde, an ex Head Teacher to keep her eagle eye on this and present regular updates. Any parishioner can ask to see this account.



Currently the Pavilion Fund stands at £1584 which includes £1000 from the village fete profits last year. Other money has come in from private donations and collecting boxes. Profit of nearly £400 from the cricket coaching will be added to this once the tuck stock check has been completed.

Another £2000 reported in the August newsletter as being raised will be transferred to this account as soon as received by the PC.

## PETTY VANDALISM ON THE CROFT

There is absolutely no point in all of us working hard to raise money for the pavilion if it is going to suffer from repetitive petty vandalism. The law and all that political correctness stuff forbids us from naming the little horrors who have been seen but not yet caught red-handed, although the police are aware. How sad to see our lovely Croft littered daily with cans and rubbish after yet another nightly hang out session. Come on lads and lasses find something more positive to do with your life, is being a saddo really so cool? Need some help to get some activity you would enjoy going? – grants are available, suggestions in the front village hall letterbox or talk to any of us on the Croft committee.



**Nancy Holmes – Chair Town Croft & Parish Assets Committee**

## HARTFIELD IN BLOOM / SOUTH EAST IN BLOOM



On the 4<sup>th</sup> July we are to be judged for our village entry and of course we hope to do even better than last year. Hartfield has been given an exciting plan to refresh and enliven the Memorial Garden- our focal point of the village. Now we need lots of help to get the village and garden in shape. We also need more offers of sponsorship for plants, trees and shrubs to achieve new vibrancy. But most importantly, we need people to give us their time in working in the garden and around the village.

Dates for working parties are as follows:-

**Sat 3 May; Tues 13 May; Sat 31 May; Tues 10 June; Sat 28 June; Wed 2 July & Thurs 3 July.**

On Saturdays we start work, for about 2 hours, from 9.30 am onwards, meeting at the Memorial Garden and on Weekdays from 6.00 pm. Please bring trowels, forks, brooms etc to help on the working parties.

All enquiries regarding helping, sponsoring etc; please contact Sheila - on 01892 770273

**Sheila van Maurik - South East in Bloom coordinator**

**STOP PRESS STOP PRESS STOP PRESS STOP PRESS STOP PRESS STOP PRESS STOP PRESS**

Look out for our brand new website which we expect to go live within the next month.

## YOUR COUNCILLORS

- MRS. DEBORAH LITTLE**, Clerk to the Council, 01342 834409 - email [parishclerk@hartfieldonline.com](mailto:parishclerk@hartfieldonline.com)  
**CLLR. MIKE BURBRIDGE**, Chair of Environment & Transport, 01892 770919 - email [mike.burbridge@googlemail.com](mailto:mike.burbridge@googlemail.com)  
**CLLR. JOHN CHALKE**, Chairman of the Parish Council, 01892 770540 - email [johnchalke@gmail.com](mailto:johnchalke@gmail.com)  
**CLLR. PETER CRANE**, 01424 736961 - email [peter.crane@sky.com](mailto:peter.crane@sky.com)  
**CLLR. J. EDWARDE**, Chair of the Playschool Trustees, 01892 770201 - email [joedwarde@hotmail.com](mailto:joedwarde@hotmail.com)  
**CLLR. KEVIN HAWES**, Chair of Planning, 01342 825827 - email [Kevin\\_Hawes@talktalk.net](mailto:Kevin_Hawes@talktalk.net)  
**CLLR. ANNE HIGGINS**, 01892 770312 - email [annehigginshartfield@hotmail.com](mailto:annehigginshartfield@hotmail.com)  
**CLLR. NANCY HOLMES**, Vice Chair of Parish Council and Chair of Town Croft Parish Assets, 01892 770294  
email [nancyholmes@btopenworld.com](mailto:nancyholmes@btopenworld.com)  
**CLLR. GEORGE KORBEL**, 01342 822720 - email [george@uni-com.uk.com](mailto:george@uni-com.uk.com)  
**CLLR. TOM MITCHELL**, 01892 770227 - Grove Wood Upper Hartfield E. Sussex TN7 4DP  
**CLLR. CLAIR PARK**, Chair of Rights of Way & Tree Warden, 01892 770326 - email [clairpark@btinternet.com](mailto:clairpark@btinternet.com)  
**CLLR. CHRIS SIMMONS**, 01342 850837 - Kittsmead Holtye Road Cowden Edenbridge Kent TN8 7EB  
**CLLR. JOHN SMITH**, 01892 770871 - email [cidercentre@aol.com](mailto:cidercentre@aol.com)  
**CLLR. SHEILA VAN MAURIK**, 01892 770273 - Little Cotchford Cotchford Lane Hartfield East Sussex TN7 4DN  
**CLLR. MICHAEL HOY**, WEALDEN D.C. (Hartfield Ward), 01892 770166 - email [michael.hoy@wealden.gov.uk](mailto:michael.hoy@wealden.gov.uk)  
**CLLR. DAVID JONAS**, WEALDEN D.C. Forest Row (Holtye Ward), 01342 826144 - email [david.jonas@wealden.gov.uk](mailto:david.jonas@wealden.gov.uk)  
**CLLR. FRANCIS WHETSTONE**, EAST SUSSEX C.C. 01892 770304 - email [franciswhetstone@eastsussex.gov.uk](mailto:franciswhetstone@eastsussex.gov.uk)