



HARTFIELD PARISH COUNCIL

Newsletter – Summer 2016

Parish Council Review

Firstly, the Council would like to thank all the volunteers who turned out for the village clean at the start of June, excellently organised by Barbara Maude. It was wonderful to see the sense of community and pride.

It was very positive that representatives of Youth Voice were able to present some of their ideas and thoughts at the July Parish Council meeting and we look forward to developing those ideas to see what more we can do for the youth of the Parish.

The Annual Meeting on the 18th April 2016 highlighted the need of local groups for new volunteers. If you want to get involved in helping out, for example with the Fete or Village Hall, please get in touch for contact information. Volunteers for the memorial garden and rights of way working party are also welcomed.

Whilst on the subject of volunteers, we must thank Laura Hatch for her time as a parish councillor. She has now moved to pastures new and we wish her luck in her new home. Laura's resignation leaves a Parish Councillor vacancy. Please consider joining this team of committed people who work as volunteers in the interests of the community.

The grant scheme was again open for local groups in 2016 and this year the Parish Council approved grants of almost £5,000. These will support a set of diverse local groups, including youth groups, Hartfield and Hammerwood Village Halls, Coleman's Hatch Bowling Club, the First Hartfield Scout Group, Guides, the Weald Link bus service and Wealden's Citizens Advice Bureau.

Thanks to James Castle and his wealth of information which has helped the Parish Council to secure a grade II listing for the Hartfield War Memorial. Thanks also to James and his son Toby for their traditional flag display and stopping of the High Street traffic to mark the 100 year anniversary of the Battle of the Somme.

The Mary McGlew memorial bench is now in situ outside the pavilion. The Parish Council are very grateful for the donation and are always pleased to place memorial benches within the Parish. Should you be interested in organising a memorial bench please contact the Clerk.

The Parish Council is providing another free familiarisation on the defibrillator and CPR (resuscitation) training in September. Please note that the training session on Wednesday 24th August 2016 has been cancelled. Anyone interested in taking part in September should contact the Parish Clerk to book a place.

You may have noticed that the grass cutting has been below standard this summer and a number of you have complained. We share your frustration. East Sussex County Council has changed contractor this year and the contractor has failed to carry out some of the planned cuts. The Parish Council has expressed its dissatisfaction with East Sussex County Council and continues to push for action and explore other options.

This is my first newsletter as Chair of the Parish Council and I look forward to serving and contributing within the Parish in this role.

Giles Horner, Chairman of Hartfield Parish Council

What is Youth Voice?

Youth Voice is a group of young people who come together each month to share and discuss ideas about improving facilities in the village and activities for young people. This group is now known as the

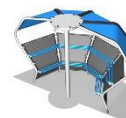


Hartfield Youth Forum

The Forum has seven members mostly from year 9 upwards. The next Youth Forum meeting is on Wednesday 7th September in Goods Yard House (near the Playschool). If you have any ideas about how we can improve youth facilities in the village, then come along and share them.

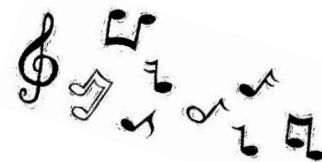


We are currently discussing with Hartfield Parish Council the possibility of having a youth shelter somewhere on the Croft. The details have yet to be decided.



“Pulse” - will start to beat on 19 September 2016

Pulse is a youth club for the young people of Hartfield in year 9 upwards. It will run every Monday from 7.35 – 8.45pm. in the Village Hall. It costs £2 to get in and there is a tuck shop with sweets and drinks. It is a great place to meet with friends. There is loads to do or just hang out!



“HYPE”...

...is the youth club for young people in years 7 and 8. It has been running very successfully for the past year on Monday evenings, 6.15 - 7.35pm. Entry £2 and there's a tuck shop. HYPE looks forward to welcoming all the new year 7s on 19 September.

Hartfield Youth Forum

Pulse and Hype are organised by St Mary's Church, Hartfield, with a financial contribution from Hartfield Parish Council.

Hartfield 10k and Fun Run 2016

Thanks to everyone who helped to raise

£2341

for new youth facilities.





HARTFIELD VILLAGE HALL

The Trustee Management Committee of Hartfield Village Hall are working really hard to improve your hall. Helped enormously by a match funded grant from Wealden District Council Community Fund, we have managed to get the remaining southern side of the roof retiled. We are exceedingly grateful to our local roofer Neil Waghorn of Ridgetop Roofing and Building who has done a superb job at a competitive price. We would also like to thank the Parish Council for their contribution from their annual grant scheme to renovate the fire doors. Thanks to Paula too for brightening up the Inkpen room with new curtains etc. Dave Graham and Martin Donner have worked hard to fix up a new sound system and with the installation of Broadband we hope to encourage new users as lettings are our lifeblood and the only source of regular income apart from our small management team's tireless efforts to fund raise. Please look out for future events and try to support them if you can.

Huge congratulations to our Chairman, Jim Lusted who got married this week to his longstanding partner Valda.

Nancy Holmes – Secretary Hartfield Village Hall

Defibrillator Training

In July the Parish Council held another free training session in basic first aid and how to use the recently installed defibrillator. Some of our councillors attended and found it really interesting. Cllr Emery who has young children herself, was able to find out more about resuscitation for children as well as basic lifesaving and defibrillator training and said she would recommend this training to everyone. It was hugely informative and Lynn the trainer does an excellent job of making life saving processes memorable and is very reassuring. The Parish Council will run a final free session for the year on 8th September at 7pm. To confirm your place please leave a message on 01342 822404 or email:

parishclerk@hartfieldonline.com



Our Parish Clerk and Councillors are here to help – Do contact us!

Clerk to the Council	Mrs. Emma Fulham	01342 822404 or Mondays 01892 771140	parishclerk@hartfieldonline.com
Chair of the Parish Council.	Cllr. Giles Horner	0203 4016895	gileshorner@hotmail.com
Vice Chair of the Parish Council & Chair of Finance	Cllr R Eastwood	01342 851275	rogerceastwood@gmail.com
Chair of Planning	Cllr. Anne Higgins	01892 770312	annehigginshartfield@hotmail.co. uk
Chair of Environment & Transport	Cllr. Mike Colenutt	01892 770840	mikecolenutt@btinternet.com
Chair of Town Croft	Cllr. John Smith	01892 770871	smithorchardview@aol.com
	Cllr Robert Nathan	01892 770903	r.nathan@btinternet.com
	Cllr Barbara Maude	07890 349794	barbaramaude@btinternet.com
	Cllr Stephen Howard	07983 270480 or 01892 770659	stephenhow@hotmail.com
	Cllr Anita Emery	07834 457785	neat1975@icloud.com
	Cllr. Christine Tamplin	01342 824064	casablancaurseries@tiscali.co.uk
Representing Holtye Ward of Hartfield	Cllr. Charlotte Beare	01342 850669	charlottebeare@btinternet.com
Wealden District Councillor (Hartfield Ward)	Cllr. Chris Hardy	01892 771344	cldr.chris.hardy@wealden.gov.uk
Wealden District Councillor (Holtye Ward)	Cllr. Rowena Moore	01342 314402	cldr.rowena.moore@wealden.gov .uk
East Sussex County Councillor	Cllr. Francis Whetstone	01892 770304	cldr.francis.whetstone@eastsussex.gov.uk

Other Useful Numbers

POLICE [Contact us online](#) or call 101 when it's less urgent than 999 for Police, Fire or Ambulance.

Wealden District Council –01323 443322 - 8.30 am -5 pm Council Offices at Vicarage Lane Hailsham BN27 2AX

East Sussex County Council 0345 60 80 190 Offices at County Hall St Anne's Crescent, Lewes, East Sussex BN7 1UE

For grass or highway issues please contact East Sussex County Council on Phone: 0345 60 80 193 or Email:

customer@eastsussexhighways.com

Important Dates for the diary:

Fete 3rd September from 12pm

Parish Council Meeting 5th September 7:30pm